

# Year 1 Knowledge Organiser

Summer 2024



## Lesson Sequence



1. Identify and name a variety of everyday materials



2. Distinguish between an object and the material it is made from



3. Describe the properties of everyday materials



4. Identify objects that are natural and those that are manmade



5. Predict and identify if an object will float or sink



6. Explore which materials are best for different objects

## Natural objects



## Man-made objects



## Objects floating



## Objects sinking



## Objects which absorb water



## Objects which repel water



## Different Materials



fabric

## Objects made from Materials



shirt



metal



bolts



wood



chair



plastic



bottle

## Opaque



## Transparent





### Lesson Sequence



1. Build a structure strong enough to withstand wind



2. Build a waterproof structure



3. Understand the properties of lass and its uses



4. Understand that materials are used to create a variety of furniture



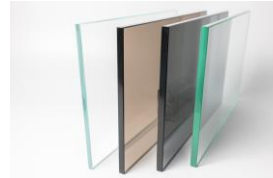
5. Explore a variety of fabrics and understand their different properties



6. Explain the uses of materials and why they are suitable

Materials which are suitable to use to build a window.

plastic



glass



Objects which are suitable to use in windy weather.



windsock



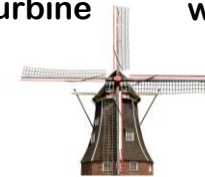
windbreaker



wind turbine



wind toy



windmill

Objects which are made from cotton.



trousers



t-shirt



jacket



bag

Clothing which is suitable to wear in wet weather.



rain jacket



waterproof  
trousers



wellington boots



rubber  
gloves

Materials which are suitable to make a house from.



bricks



timber frame

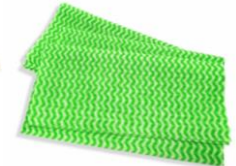


breeze block

Materials which are absorbent.



sponge



cloth



## Knowledge organiser - Local area

### Our Learning

1. What is rural and urban areas?
2. To know simple compass directions
3. How to read basic symbols on an Ordnance Survey map?
4. What are the human and physical features of our local area?
5. What are the features of our school?

### Substantive Knowledge

- Newbold Verdon is a rural area.
- Simple compass directions are: north, east, south and west.
- A key is used on a map to help us to understand symbols and pictures.
- Use locational and directional language (e.g. near, far, left, right)
- Human features are made by humans.
- Physical features are made by nature.



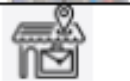



Our local area



Map of our local area

### Core vocabulary

	rural	a place outside the city with less buildings and more open space
	urban	an area within a city with lot of tall buildings and many people
	local	something that is close
	map symbol	a small picture on a map that shows you where different things are